

# Year 3/4 Art & Design Knowledge Organiser

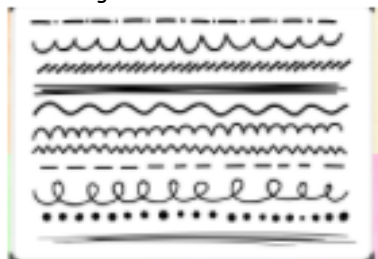
## Autumn - Drawing



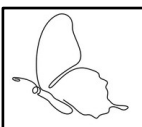
In this unit of work, I will use greater control and detail, as well as confidently use shapes to sketch accurate proportions.

### Prior Learning

There are different lines and shapes in drawings...



Line work can be on a small and large scale.



Line drawings can be created with different media...



Pencil



Paint



Chalk

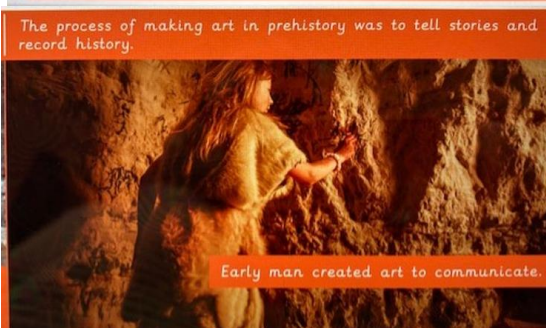
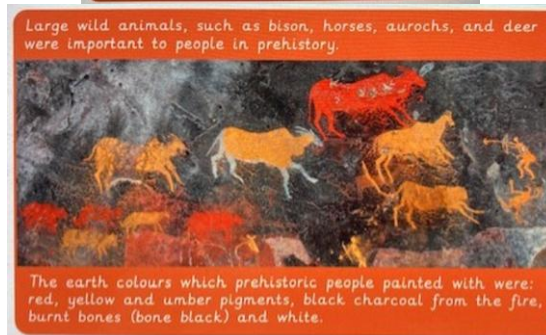


Felt Tip



Crayon

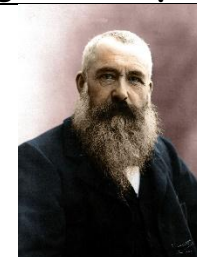
### Sticky Knowledge



### Vocabulary

Line	A line is the path created by a point moving in space. It is one-dimensional and can vary in width, direction, and length. Lines often define the edges of a form. Lines can be horizontal, vertical, or diagonal, straight or curved, thick or thin.
Orientation	The direction of lines
Shape	The form of an object or its outline
Texture	The way a particular object feels or looks. A texture is usually described as smooth or rough, soft or hard, coarse or fine, matt or glossy, and etc.
Tone	Shading using areas of dark and light to create a 3D effect.
Cave artists	Painted on walls and ceilings in prehistoric times, around 10,000 to 20,000 years ago.
Charcoal	A black crumbly drawing material made of carbon and often used for sketching.
Geometric shape	The form or outline of a 2D shape
Proportions	The scale and size of an object.
Scaling	The overall physical size of an artwork or objects in the artwork.

### Significant person

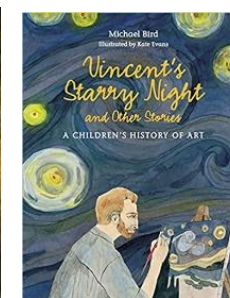
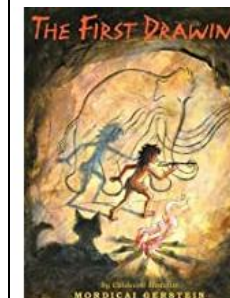


Claude Monet

Claude Monet did not receive a formal artistic education but learned informally from other artists. As a teenager, he studied drawing with a local artist. Later, Monet was befriended by Eugène Boudin, who introduced him to painting in the open air.



### Relevant Books



Paint

Drawing

Collage

Printing

Digital Media

Sculpture

Textiles