

Our Aims

At St Vincent's Catholic Primary School we value the abilities and achievements of all children and strive to ensure every child achieves their full potential in the classroom and beyond. We are committed to providing for each child the best possible environment for learning which is safe, inclusive and happy, and where they are not afraid to tackle new challenges and develop the skills they need to be fully equipped to take on the next stage of their learning journey.

Our Aims in relation to SEND are to:

- Ensure that all pupils have access to a full and balanced curriculum
- Provide a differentiated curriculum appropriate to individual's needs and abilities
- Ensure early identification of children requiring SEND provision
- Accept responsibility for meeting the needs of children with SEND
- Ensure that children with SEND take as full a part as possible in all school activities
- Ensure that parents of children with SEND are kept fully informed of their child's progress and attainment
- Ensure that children with SEND are involved, where practicable, in decisions affecting their education and progress

Partnerships with parents

At St Vincent's we recognise that you, as parents, are the first and primary educators of your child. We want to work in partnership with you, listening and discussing, to ensure that any identified needs are provided for and your child continues to reach their potential from their individual starting point. Parents are kept informed and involved through:

- Newsletters and diaries
- Texting and email service
- Parents evenings twice a year
- End of year school report

More personalised communication and involvement is through:

- Parent drop in session (Thursday)
- Discussion with the class teacher, SENDCO or Head Teacher
- Reward and Class assemblies
- Invite a loved one to lunch
- IEP review meetings

Contact us

If you have any concerns or questions or need to get in touch about your child's learning and progress, please contact your child's class teacher in the first instance, then the SENDCO (Mrs Long) or the Head Teacher (Mr Vernon)

Tel: 01925 726544

E-mail: stvincents_primary@warrington.gov.uk

Parent Guide

Special Educational Needs and Disabilities (SEND)



St Vincent's Catholic Primary School

SENDCO: Mrs Kathryn Long
Head Teacher: Mr Dominic Vernon

Telephone: 01925 726544
E-mail: stvincents_primary@warrington.gov.uk

Website: www.stvincentsprimary.org
Twitter: @stvincentsrcp

To love and serve as Jesus shows us

Quality first teaching for children of all abilities is made up of differentiated learning and targeted groups to provide short-term intervention, support or focus. If your child is not making enough progress with all of this in place, then further analysis may be required so that a more personalised approach can be taken to meet their needs. You will work closely with your child's class teacher, supported by the SENDCO, to identify and review targets and progress.

Identification of SEND

When identifying SEND we consider the following categories of need:

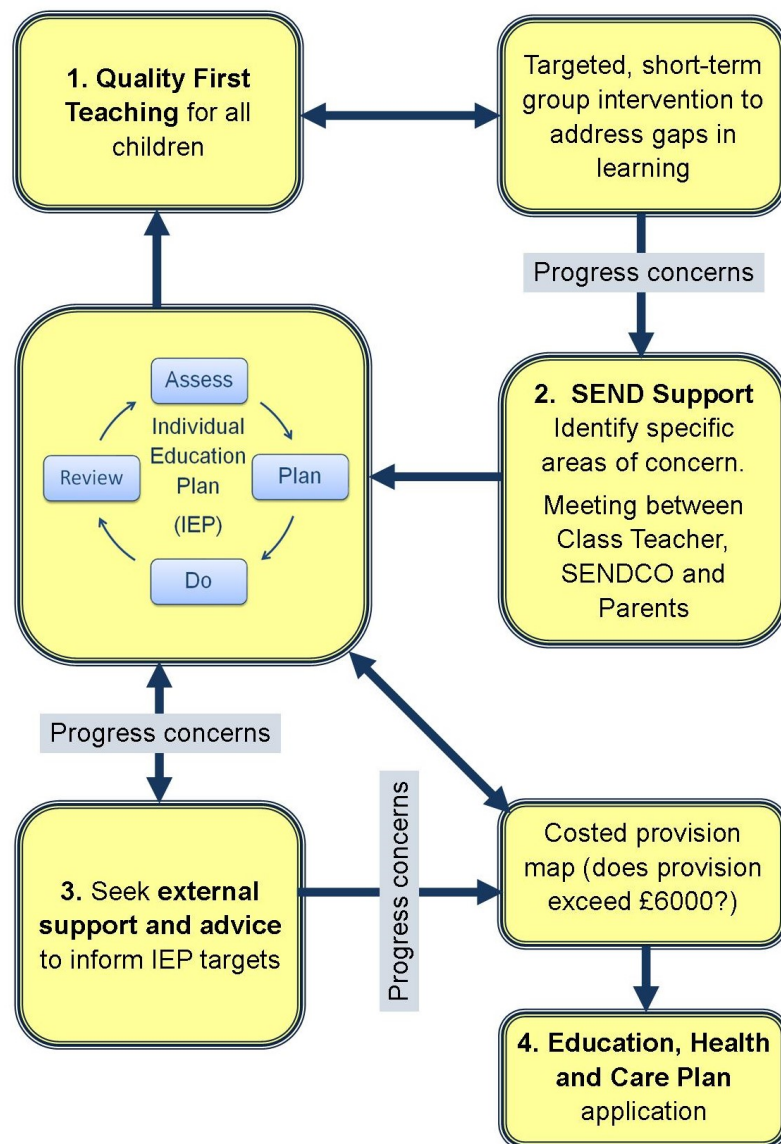
- Communication and interaction
- Cognition and Learning
- Social, emotional and mental health difficulties
- Sensory and/or physical

Staff, working with you, will complete the relevant sections of our 'Identifying SEND' documentation so that specific target areas are highlighted.

Individual Education Plan (IEP)

Your child's Individual Education Plan (IEP) will include specific, measureable, achievable, realistic targets based on their needs identified and set in discussion with you and your child. These targets will inform the support that your child receives in school and can be worked on at home. IEP targets will be reviewed with you and your child each term or half-term as appropriate to your child's needs.

Our SEND Flowchart



Further action

If, after a number of assess, plan, do and review cycles, your child is not making sufficient progress, we may feel that more specialist advice or support is needed to help meet the identified needs of your child. We may involve some of the following professionals (or others as appropriate) to help inform the IEP targets that we set and work on with your child:

- Educational Psychologist
- Speech and Language Therapy
- Occupational Therapy
- Physiotherapy
- CAMHS
- School Health / Paediatrician
- Vision or hearing impaired services
- Orthoptist service
- Early help
- Social, Emotional, Mental Health (SEMH) specialist teachers

Education, Health Care Plan (EHCP)

If your child continues to make very little/no progress despite the support already in place based on specialist advice, and this support is equivalent to at least £6000, we may then need to consider an EHCP application to fund further support for your child.

For more information about this process, you can visit: www.askollie.warrington.gov.uk