



Year 1/2 History Knowledge Organiser: How did people find out about the world?



Subject Specific Skills

- The lives of significant individuals in the past who have contributed to national and international achievements. Some should be used to compare aspects of life in different periods.

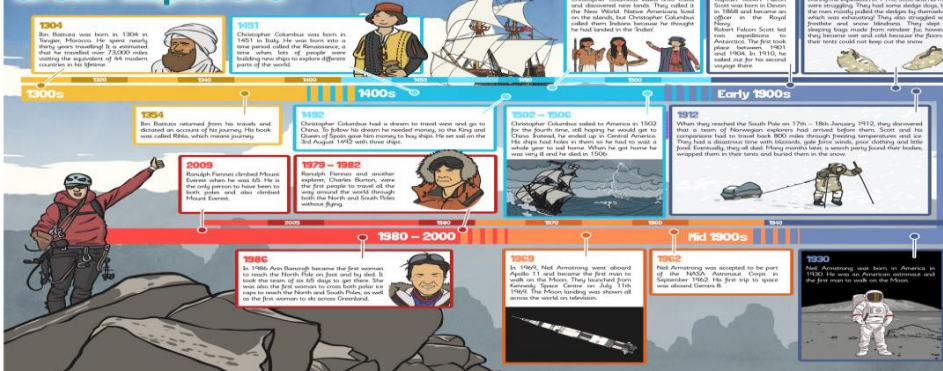
Prior knowledge:

- Talking about the lives of the people around them and their roles in society.
- Knowing some similarities and differences between things in the past and now
- Drawing on their experiences and what has been read in class.
- Understanding the past through settings, characters and events encountered in books read in class and storytelling.

Key Enquiry Questions

- What does it mean to be significant?
- What is an explorer?
- Who was Amelia Earhart?
- Who was Christopher Columbus?
- Who was Ernest Shackleton?
- How are all these explorers similar or different?

Great Explorers



Key Vocabulary

Commemorate: To celebrate and remember a person or event.

Explorer: An explorer is someone who goes on an exploration.

Exploration: A journey where explorers travel to unfamiliar places.

Polar: Used when talking about anything to do with the North Pole or the South Pole.

Recent: In the past but not long ago.

Rihla: The shortened name of the book where Ibn Battuta's travels were written down. The word 'Rihla' means 'journey' in Arabic.

Significant: Important and worth knowing about.

Voyage: A long journey, especially by ship. The word voyage can also be used to describe journeys in space.

Key individuals

