



Year 3 Geography Knowledge Organiser: Local Study



Subject Specific Skills

To name and locate counties and cities of the United Kingdom, geographical regions and their identifying human and physical characteristics, key topographical

To use the eight points of a compass, four and six-figure grid references, symbols and key (including the use of Ordnance Survey maps)

To use maps, atlases, globes and digital/computer mapping to locate countries and describe features studied in the context of the UK's rivers and seas

To identify the position and significance of latitude, longitude, Equator, Northern Hemisphere, Southern Hemisphere, the Tropics of Cancer and Capricorn, Arctic and Antarctic Circle, the Prime/ Greenwich Meridian and time zones (including day and night) in the context of London's history

Prior Learning

Pupils should develop knowledge about the world, the United Kingdom and their locality.

Key Knowledge:



Penketh is a civil parish and suburb of Warrington, Cheshire, England. It is located about 3 miles west of Warrington town centre. It has a population of 8,699. It is in the historic county of Lancashire.

Key Vocabulary:

Map - a detailed plan of an area showing rivers and roads.

Atlas - a book of maps.

Country - a part of the world with its own borders.

Compass - an instrument for finding directions.

Grid Reference - a number which refers to a place on a map.

Symbol - a design that represents something.

Key - a reference to help understand a map.

River - a large stream of fresh water.

Mountain - a very high piece of land- higher than a hill.

Natural resources - energy, food, minerals, water.

Settlements - where people can live.

Footpath - the green dashed line (on OS Explorer Maps) or pink dashed line (on OS Landranger Maps) are footpaths with public right of way.

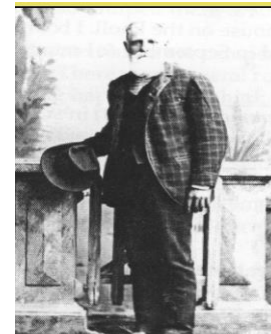
Bridle path - A bridle path, also bridleway, equestrian trail, horse riding path, ride, bridle road, or horse trail, is a path, trail or a thoroughfare that is used by people riding on horses.

Urban - in, relating to, or characteristic of a town or city.

Rural - a rural area or countryside is a geographic area that is located outside towns and cities.

Coastal - of or near a coast. **Human:** Man made

Key Individual Isaac Gandy



Key Knowledge:

TOURIST INFORMATION

	Camp site
	Caravan site
	Garden
	Golf course or links
	Information centre, all year / seasonal
	Nature reserve
	Parking, Park and ride, all year / seasonal
	Picnic site
	Selected places of tourist interest
	Telephone, public / motoring organisation
	Viewpoint
	Visitor centre
	Walks / Trails
	Youth hostel